



A wonderfully crafted pylon foot that combines great deflection for running response with a free and easy walking action. The independent springs provide efficient energy return and the flexible extended pylon minimises shock load transmission to the skin interface and proximal joints. The Elite Blade is a great crossover foot offering the user comfort and a lively loading response for work, leisure and sports activities.

- e-carbon foot with independent springs
- Dynamic pylon enhances shock absorption
- Lightweight because of extended blade
- Size range 24cm to 30cm
- 36 month warranty
- Supplied with shifting, rotating male pyramid

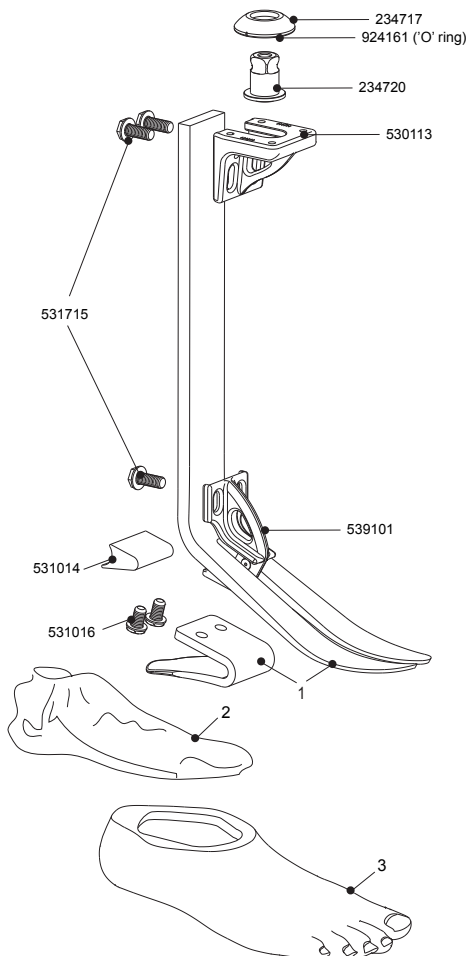
Material:	e-carbon/Aluminium /Stainless steel
Component weight:	580g (full length without footshell)
Max. Amputee weight:	130kg K1-K4 166kg K1-K3
Build height:	200mm - 365mm (min - max)
Footshell height:	24/28 70mm 29/30 80mm
Heel height:	10mm

Recommended for activity level:



Activity	Impact (kg)	44-52	53-59	60-68	69-77	78-88	89-100	101-116	117-130	131-147	148-166
		LOW K3	1	1	2	3	4	5	6	7	8
MOD K4		1	2	3	4	5	6	7	8	9	
HIGH K4		2	3	4	5	6	7	8	9		

Foot spring set



**Example**



Two foot shell colour tones available; for dark tone please add 'D' to part number

**1 Spring Kits**

Foot Size 24/26	Foot Size 27/28	Foot Size 29/30
Set 1 - 539610	Set 1 - 539619	Set 1 - <input type="text" value="Special order only"/>
Set 2 - 539611	Set 2 - 539620	Set 2 - 539630
Set 3 - 539612	Set 3 - 539621	Set 3 - 539631
Set 4 - 539613	Set 4 - 539622	Set 4 - 539632
Set 5 - 539614	Set 5 - 539623	Set 5 - 539633
Set 6 - 539615	Set 6 - 539624	Set 6 - 539634
Set 7 - 539616	Set 7 - 539625	Set 7 - 539635
Set 8 - 539617	Set 8 - 539626	Set 8 - 539636
Set 9 - 539618	Set 9 - 539627	

**2 Glide Sock**

One size fits all - 532811

**3 Foot shells**

Left	Part Number	Right	Part Number
24L	539005	24R	539006
25L	539007	25R	539008
26L	539009	26R	539010
27L	539011	27R	539012
28L	539013	28R	539014
29L	539015	29R	539016
30L	539017	30R	539018

**Fitting clamp - 941255** fitting clamp for alignment and set-up. Use also as cutting and drilling guide. Available separately

\*Component weight shown is for a size 27cm, but weights vary with size  
Build part numbers are for assembly guidance only and may not be for sale separately