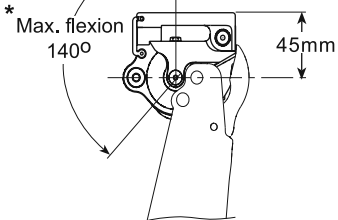
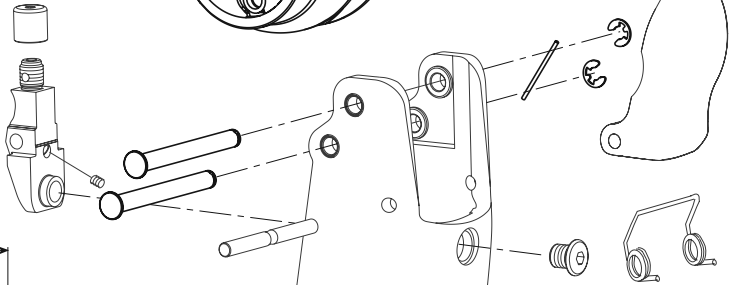
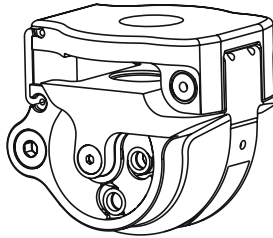
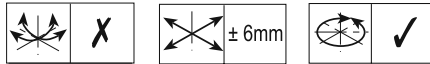
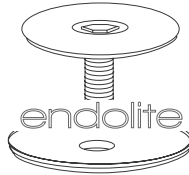




endolite

get busy living

Stanceflex ESK+ 239149

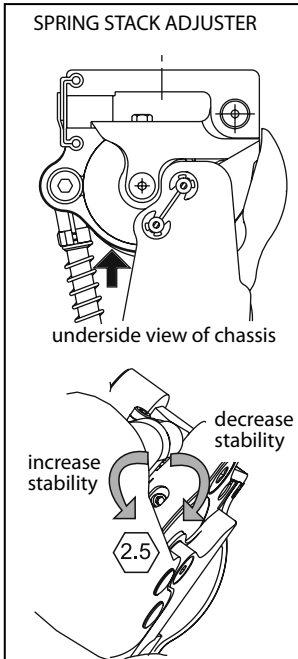


endolite

\* Includes 5° flexion of knee flexion rubber

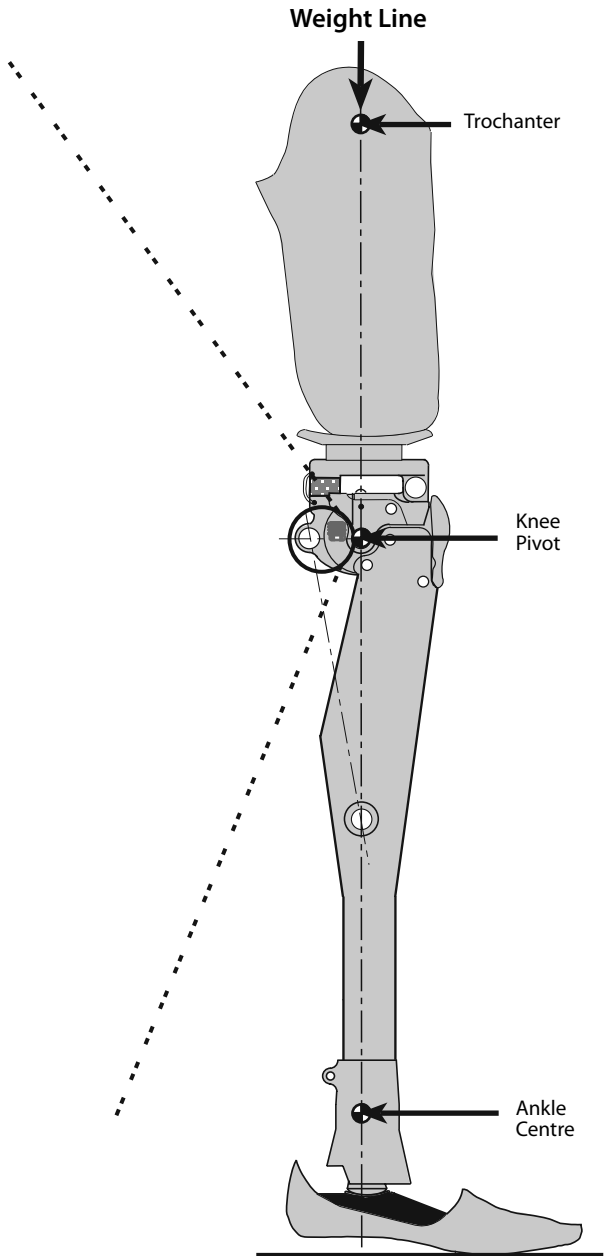
# 1 Static Alignment Guide

## Walking trials

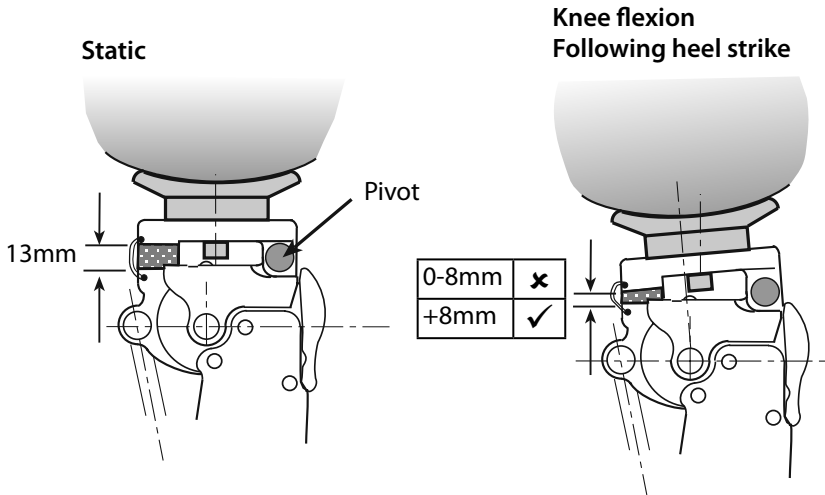
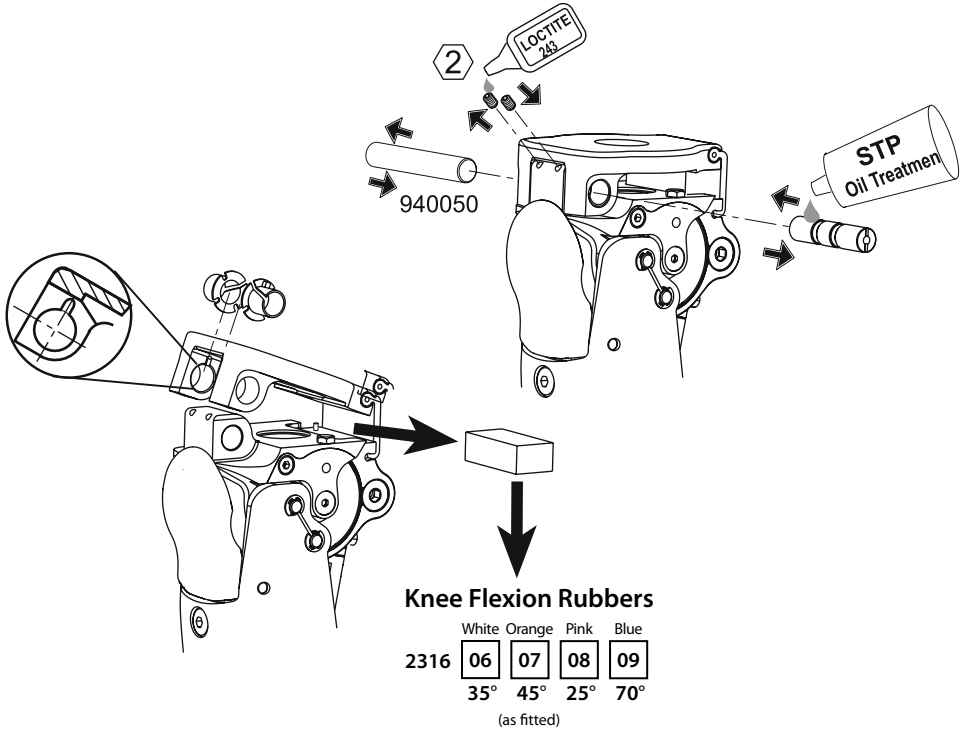


Fully extend limb to access the adjuster. Rotate the SPRING STACK ADJUSTER to achieve the required stability for the individual user. *Note: Audible clicks should be heard upon adjustment, and the adjuster is self locking.* Tighten the SPRING STACK to reduce stability. Release the SPRING STACK to increase stability - See above diagram.

If required, the adjuster may be reset to the factory setting. This can be achieved by reducing stability by six audible clicks from the maximum setting.

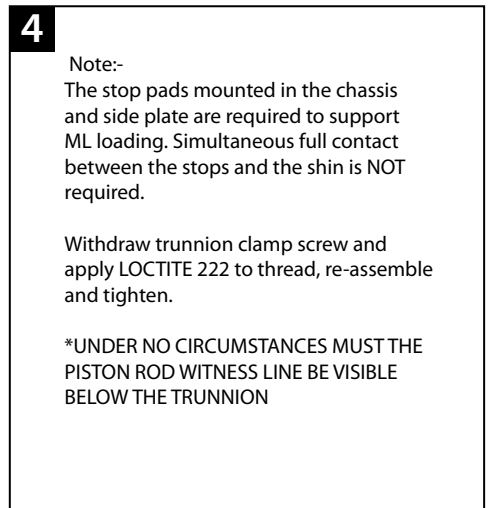
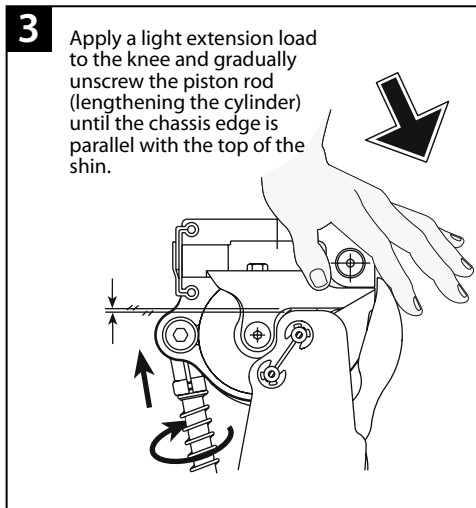
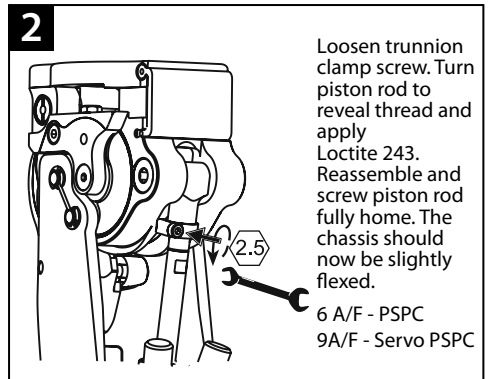
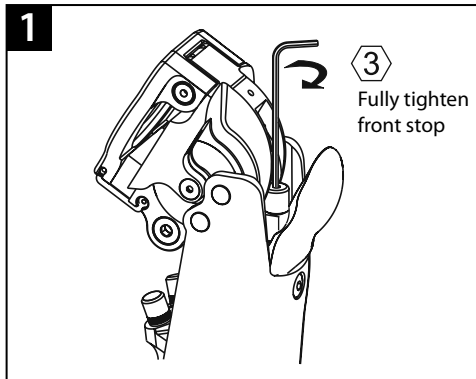


## 2 Changing Flexion Rubbers



# 3 Front Stop adjustment - Adjustable Trunnion

As fitted to the PSPC and Servo PSPC



Servo PSPC

The Servo PSPC should be adjusted as above except the trunnion should be rotated further, if required, until the cut-out in the piston rod is posterior.

## Front Stop adjustment - Non-Adjustable Trunnion

[As fitted to the IP+ and Hydraulic Cylinders]

No adjustment is necessary when using these cylinders. They require the front stop to be fully tightened as shown in Stage 1.

---

## 4 Maintenance

To maintain optimum performance, a periodic inspection for unacceptable noise, play and stability is recommended. The period between inspections is determined by factors such as the activity of the user, frequency of usage and the stability setting of the knee.

At these inspections:

Check and replace front stop if necessary ( see Section 5).

Dis-assemble, clean and re-assemble as shown on pages 7 & 8.

As a guide, if the setting is 6 clicks or above and the user averages 600,000 steps per annum, an annual inspection is recommended.

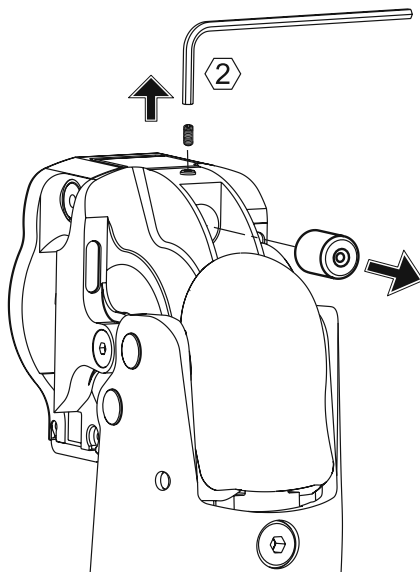
If the stability setting is less than 6 clicks and/or the user averages fewer than the average number of steps, the period inbetween inspections may be longer.

The use of a Limb Activity Monitor is recommended to determine step count.

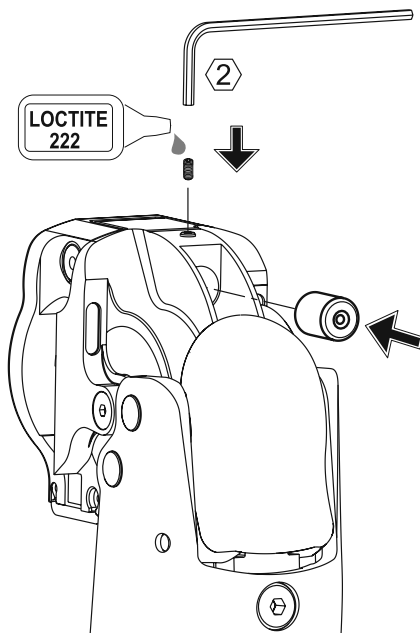
Adjustment and maintenance must be carried out by competent, trained personnel.

If in doubt contact Blatchford Products Limited.

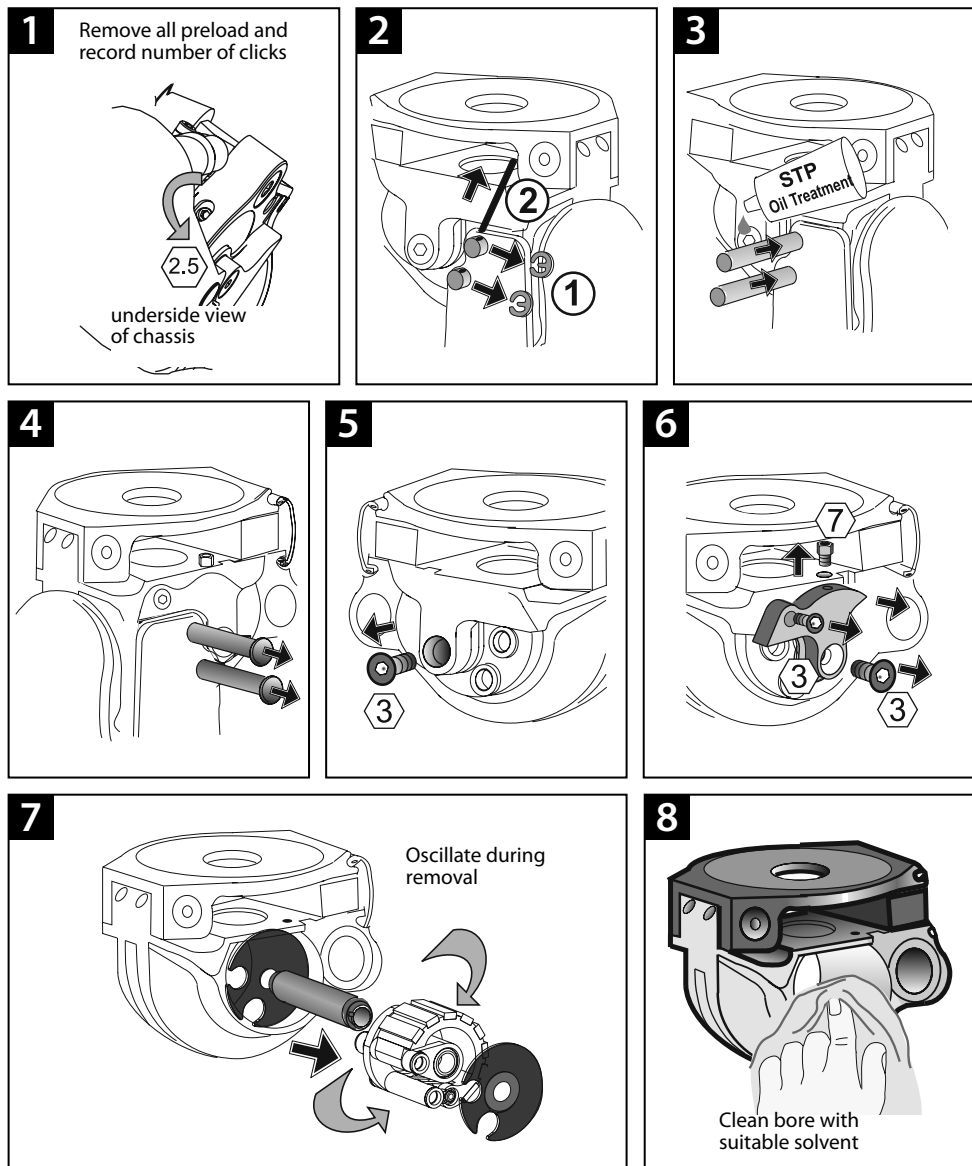
## 5 Changing front stop buffer



When fitting a new front stop, always re-adjust, and if applicable check length of cylinder if fitted with an adjustable trunion. See page 4



## 6 Removing ESK+ mechanism



# 7 Replacement of ESK+ mechanism

**1**

Offer up side plate to align slot in spindle ② with dowel ① but do not fit at this stage

**2**

Screw spindle to chassis

**3**

Oscillate during assembly

RH

LH

**4**

LOCTITE 222

**5**

STP Oil Treatment

**6**

**7**

**8** Re-apply preload with recorded no. of clicks

underside view of chassis

2.5



Distributor/Distributeur/Händler/Distributore/Distribuidor

### **Head Office**

Chas A Blatchford & Sons Ltd  
Lister Road  
Basingstoke  
Hampshire  
RG22 4AH  
United Kingdom  
Tel: +44 (0) 1256 316600  
Fax: +44 (0) 1256 316617  
Email: [sales@blatchford.co.uk](mailto:sales@blatchford.co.uk)  
[www.endolite.co.uk](http://www.endolite.co.uk)

### **Customer Services UK**

Prosthetic and Orthotic Products  
11 Atlas Way  
Atlas North  
Sheffield  
S4 7QQ  
United Kingdom  
Tel: +44 (0) 114 263 7900  
Fax: +44 (0) 114 263 7901  
Email: [sales@blatchford.co.uk](mailto:sales@blatchford.co.uk)  
[www.endolite.co.uk](http://www.endolite.co.uk)

### **endolite North America**

1031 Byers Road  
Miamisburg  
Ohio 45342  
USA  
Tel: 800.548.3534  
Fax: 800.929.3636  
Email: [info@endolite.com](mailto:info@endolite.com)  
[www.endolite.com](http://www.endolite.com)

### **endolite Germany**

Endolite Deutschland GmbH  
Holzstr. 5  
95336 Mainleus  
GERMANY  
Tel: +49 9229 9737 001  
Fax: +49 9229 9737 006  
Email: [info@endolite.de](mailto:info@endolite.de)  
[www.endolite.de](http://www.endolite.de)

### **endolite France**

Parc d'Activités de l'Aéroport, 125 Impasse  
Jean-Baptiste Say  
34470 PEROLS  
FRANCE  
Tel: 00 33 (0) 467 820 820  
Fax: 00 33 (0) 467 073 630  
Email: [contact@endolite.fr](mailto:contact@endolite.fr)  
[www.endolite.fr](http://www.endolite.fr)

### **endolite India Ltd**

A4 Naraina Industrial Area  
Phase - 1  
New Delhi  
INDIA – 110028  
Tel: 91 11 45689955  
Fax: 91 11 25891543  
Email: [endolite@vsnl.com](mailto:endolite@vsnl.com)  
[www.endoliteindia.com](http://www.endoliteindia.com)

