

MEDEX



MODULAR PROSTHETIC COMPONENTS 2018/2019



See our new line of
Pediatric Components

1-888-886-2420
WWW.MEDEXINTERNATIONAL.COM



SACH FOOT ADAPTER

Connector between SACH Energy Storing Foot and pylon. Includes stainless steel M8-10 bolt, lock washer, and flat washer.

Steel M8 Bolt

| Cat. No. | Alloy | Weight | Max Patient Weight |
|-------------|----------|--------|--------------------|
| 2T09 | Titanium | 80gr | 100kg/220lbs |

Steel M10 Bolt

| Cat. No. | Alloy | Weight | Max Patient Weight |
|-------------|----------|--------|--------------------|
| 2T10 | Titanium | 93gr | 136kg/300lbs |
| 2S10 | S. Steel | 130gr | 136kg/300lbs |
| 2A10 | Aluminum | 106gr | 136kg/300lbs |



SACH FOOT ADAPTER (round)

Includes stainless steel M10 bolt, lock washer, and flat washer. Weight of the component includes stainless steel bolt and washers.

| Cat. No. | Alloy | Weight | Max Patient Weight |
|-------------|----------|--------|--------------------|
| 2T11 | Titanium | 80gr | 136kg/300lbs |



RECEIVER - TUBE UNIT

Includes four set screws.

| Cat. No. | Alloy | Weight | Max Patient Weight |
|-------------|----------|--------|--------------------|
| 2A12 | Aluminum | 90gr | 100kg/220lbs |
| 2T12 | Titanium | 313gr | 136kg/300lbs |

Warning: Do not shorten overall length to less than 55mm

EXTRA LONG TUBE WITH RECEIVER

With 4 tilt adjustment set screws and 30mm anodized aluminum alloy tube (450 x 30 x 2.35mm).

| Cat. No. | Alloy | Weight | Max Patient Weight |
|-------------|----------|--------|--------------------|
| 2T17 | Titanium | 343gr | 136kg/300lbs |
| 2S17 | S. Steel | 385gr | 136kg/300lbs |

LONG TUBE WITH RECEIVER

With 4 tilt adjustment set screws and 30mm anodized aluminum alloy tube (400 x 30 x 2.35mm).

| Cat. No. | Alloy | Weight | Max Patient Weight |
|-------------|----------|--------|--------------------|
| 2T15 | Titanium | 308gr | 136kg/300lbs |
| 2S15 | S. Steel | 351gr | 136kg/300lbs |
| 2A15 | Aluminum | 308gr | 100kg/220lbs |

SHORT TUBE WITH RECEIVER

With 4 tilt adjustment set screws and 30mm anodized aluminum alloy tube (250 x 30 x 2.35mm).

| Cat. No. | Alloy | Weight | Max Patient Weight |
|-------------|----------|--------|--------------------|
| 2T16 | Titanium | 218gr | 136kg/300lbs |
| 2S16 | S. Steel | 261gr | 136kg/300lbs |
| 2A16 | Aluminum | 218gr | 100kg/220lbs |

HEAVY DUTY TUBE WITH RECEIVER

Rated for patients up to 450 lbs. With 4 tilt adjustment set screws and 34mm aluminum alloy tube (400 x 34 x 2.35mm).

| Cat. No. | Alloy | Weight | Max Patient Weight |
|-------------|----------|--------|--------------------|
| 2T13 | Titanium | 334gr | 205kg/450lbs |





LONG TUBE WITH PYRAMID

30mm anodized aluminum alloy tube with pyramid (400 x 30 x 2.35mm).

| Cat. No. | Alloy | Weight | Max Patient Weight |
|-------------|----------|--------|--------------------|
| 2T14 | Titanium | 300gr | 136kg/300lbs |

SINGLE PYLON NO ADAPTER

400 x 30 x 2.35mm

| Cat. No. | Alloy | Weight | Max Patient Weight |
|-------------|----------|--------|--------------------|
| 2A18 | Aluminum | 242gr | 136kg/300lbs |



TUBE CLAMP ADAPTER

For 30mm tubes. Includes 1 rotation and 4 tilt adjustment set screws.

| Cat. No. | Alloy | Weight | Max Patient Weight |
|-------------|----------|--------|--------------------|
| 2T20 | Titanium | 70gr | 136kg/300lbs |
| 2S20 | S. Steel | 113gr | 136kg/300lbs |
| 2A20 | Aluminum | 68gr | 100kg/220lbs |



TUBE CLAMP ADAPTER (10° ANGLE)

For 30mm tubes. Includes 1 rotation and 4 tilt adjustment set screws.

| Cat. No. | Alloy | Weight | Max Patient Weight |
|-------------|----------|--------|--------------------|
| 2T22 | Titanium | 78gr | 136kg/300lbs |



ARCHED SLIDING TUBE CLAMP WITH THREADED ROTATION

Tube clamp with 36mm threads. Arched dovetail design offers adjustable angles, increasing lateral offset capability based on the pylon length. For use with 4 hole frame (3T90) or 3 arm lamination anchor (4S35).

| Cat. No. | Alloy | Weight | Max Patient Weight |
|-------------|----------|--------|--------------------|
| 4T55 | Titanium | 125gr | 136kg/300lbs |

HEAVY DUTY TUBE CLAMP RECEIVER

Rated for patients up to 450 lbs. For 34mm tube. Includes 4 tilt adjustment screws and rotation set screw.



| Cat. No. | Alloy | Weight | Max Patient Weight |
|-------------|----------|--------|--------------------|
| 2T23 | Titanium | 75gr | 205kg/450lbs |

SLIDING TUBE CLAMP RECEIVER

Tube clamp adapter on one end and pyramid receiver on the other. Slides in either direction allowing for custom lateral offset with 2 locking screws.

| Cat. No. | Alloy | Weight | Max Patient Weight |
|-------------|----------|--------|--------------------|
| 3T85 | Titanium | 149gr | 136kg/300lbs |

Arched dovetail design offers adjustable angles, increasing lateral offset capability based on the pylon length. Use when more than 11mm lateral offset is needed.

| Cat. No. | Alloy | Weight | Max Patient Weight |
|-------------|----------|--------|--------------------|
| 3T87 | Titanium | 149gr | 136kg/300lbs |

Patent Pending



SLIDING TUBE CLAMP PYRAMID

Tube clamp adapter on one end and pyramid on the other. Slides in either direction allowing for custom lateral offset with 2 locking screws.

| Cat. No. | Alloy | Weight | Max Patient Weight |
|-------------|----------|--------|--------------------|
| 3T86 | Titanium | 158gr | 136kg/300lbs |

Arched dovetail design offers adjustable angles, increasing lateral offset capability based on the pylon length. Use when more than 11mm lateral offset is needed.

| Cat. No. | Alloy | Weight | Max Patient Weight |
|-------------|----------|--------|--------------------|
| 3T88 | Titanium | 158gr | 136kg/300lbs |

Patent Pending





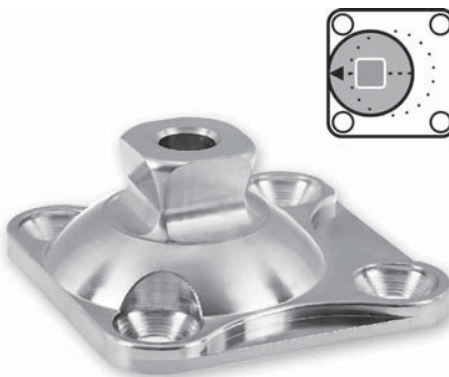
PYRAMID WITH 4 HOLES

Connector between socket and pylon, 8.2mm center hole.

| Cat. No. | Alloy | Weight | Max Patient Weight |
|-------------|----------|--------|--------------------|
| 3T10 | Titanium | 50gr | 136kg/300lbs |
| 3S10 | S. Steel | 84gr | 136kg/300lbs |
| 3A10 | Aluminum | 51gr | 100kg/220lbs |

Connector between socket and pylon. 10mm center hole.

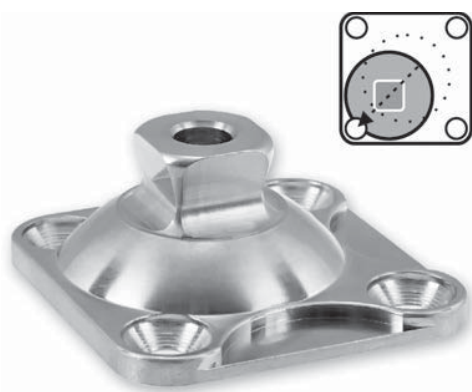
| Cat. No. | Alloy | Weight | Max Patient Weight |
|-------------|----------|--------|--------------------|
| 3T09 | Titanium | 46gr | 136kg/300lbs |



PYRAMID WITH 4 HOLES & AXIAL OFFSET

Connector between socket and pylon with pyramid set 8mm off from axis, 8.2mm center hole.

| Cat. No. | Alloy | Weight | Max Patient Weight |
|-------------|----------|--------|--------------------|
| 3T11 | Titanium | 60gr | 136kg/300lbs |
| 3S11 | S. Steel | 108gr | 136kg/300lbs |



PYRAMID WITH 4 HOLES & DIAGONAL OFFSET

Connector between socket and pylon with pyramid set 5mm off from axis, 8.2mm center hole.

| Cat. No. | Alloy | Weight | Max Patient Weight |
|-------------|----------|--------|--------------------|
| 3T12 | Titanium | 60gr | 136kg/300lbs |
| 3S12 | S. Steel | 108gr | 136kg/300lbs |

PYRAMID ADAPTER WITH 4 HOLES

Socket to pylon connector with threaded rotation.
Eliminates the use of pressure plates and sets rotation with one screw. Center pin hole diameter is 8.2mm.

| Cat. No. | Alloy | Weight | Max Patient Weight |
|-------------|----------|--------|--------------------|
| 3T18 | Titanium | 71gr | 136kg /300lbs |
| 3S18 | S. Steel | 124gr | 136kg /300lbs |
| 3A18 | Aluminum | 99gr | 100kg /220lbs |

Center hole 10mm.

| Cat. No. | Alloy | Weight | Max Patient Weight |
|-------------|----------|--------|--------------------|
| 3T19 | Titanium | 71gr | 136kg /300lbs |



RECEIVER WITH 4 HOLES

Connector between socket and pylon.

| Cat. No. | Alloy | Weight | Max Patient Weight |
|-------------|----------|--------|--------------------|
| 3T20 | Titanium | 65gr | 136kg /300lbs |
| 3S20 | S. Steel | 102gr | 136kg /300lbs |
| 3A20 | Aluminum | 40gr | 100kg /220lbs |



ROTATABLE RECEIVER WITH 4 HOLES

Rotatable connector between socket and pylon.
Threaded rotation allows rotation set with one screw.

| Cat. No. | Alloy | Weight | Max Patient Weight |
|-------------|----------|--------|--------------------|
| 3T23 | Titanium | 80gr | 136kg /450lbs |
| 3S23 | S. Steel | 130gr | 136kg /450lbs |
| 3A23 | Aluminum | 74gr | 100kg /220lbs |





ROTATABLE SLIDING PYRAMID WITH 4 HOLES

Pyramid on one end and 4 hole frame (3T90) on the other. Slides in either direction allowing for custom lateral offset with 2 locking screws.

| Cat. No. | Alloy | Weight | Max Patient Weight |
|-------------|----------|--------|--------------------|
| 3T30 | Titanium | 154gr | 136kg/300lbs |

Arched dovetail design offers adjustable angles, increasing lateral offset capability based on the pylon length. Use when more than 11mm lateral offset is needed.

| Cat. No. | Alloy | Weight | Max Patient Weight |
|-------------|----------|--------|--------------------|
| 3T31 | Titanium | 154gr | 136kg/300lbs |



ROTATABLE SLIDING RECEIVER WITH 4 HOLES

Pyramid receiver on one end and 4 hole frame (3T90) on the other. Slides in either direction allowing for custom lateral offset with 2 locking screws.

| Cat. No. | Alloy | Weight | Max Patient Weight |
|-------------|----------|--------|--------------------|
| 3T35 | Titanium | 152gr | 136kg/300lbs |

Arched dovetail design offers adjustable angles, increasing lateral offset capability based on the pylon length. Use when more than 11mm lateral offset is needed.

| Cat. No. | Alloy | Weight | Max Patient Weight |
|-------------|----------|--------|--------------------|
| 3T36 | Titanium | 152gr | 136kg/300lbs |



PYRAMID WITH 4 PRONGS

Connector between socket and pylon lamination. Rough machined prongs for improved lamination bonding. Includes rubber lamination dummy (not included in weight) 6.2mm center hole.

| Cat. No. | Alloy | Weight | Max Patient Weight |
|-------------|----------|--------|--------------------|
| 3T13 | Titanium | 62gr | 136kg/300lbs |
| 3T14 | Titanium | 52gr | 136kg/300lbs |
| 3S14 | S. Steel | 107gr | 136kg/300lbs |
| 3A14 | Aluminum | 52gr | 100kg/220lbs |

ROTATING PYRAMID WITH 4 PRONGS

A problem solver for situations where there is limited space due to stump length or high profile foot, these 4 prong lamination adapters allow for axial rotation adjustment. 8.2mm center hole.

| Cat. No. | Alloy | Weight | Max Patient Weight |
|-------------|----------|--------|--------------------|
| 3T15 | Titanium | 92gr | 136kg/300lbs |
| 3S15 | S. Steel | 124gr | 136kg/300lbs |

Patent Pending



4 SCREW PYRAMID WITH 4 PRONGS

Ideal for long stumps. Includes 4 stainless steel angular adjustment screws (flat head).

| Cat. No. | Alloy | Weight | Max Patient Weight |
|-------------|----------|--------|--------------------|
| 3T17 | Titanium | 56gr | 136kg/300lbs |
| 3S17 | S. Steel | 92gr | 136kg/300lbs |



ROTATING RECEIVER WITH 4 PRONGS

A problem solver for situations where there is limited space due to stump length or high profile foot, these 4 prong lamination adapters allow for axial rotation adjustments.

| Cat. No. | Alloy | Weight | Max Patient Weight |
|-------------|----------|--------|--------------------|
| 3T16 | Titanium | 101gr | 136kg /300lbs |

Patent Pending





DOUBLE HEAD PYRAMID

Connector between receivers.

| Cat. No. | Alloy | Weight | Max Patient Weight |
|-------------|----------|--------|--------------------|
| 3T70 | Titanium | 60gr | 136kg /300lbs |
| 3S70 | S. Steel | 109gr | 136kg /300lbs |



DOUBLE HEAD RECEIVER AND PYRAMID

For connection between a pyramid and receiver with adjustment screws. Allows changing the angles at the distal and proximal ends.

| Cat. No. | Alloy | Weight | Max Patient Weight |
|-------------|----------|--------|--------------------|
| 3T60 | Titanium | 76gr | 136kg/300lbs |
| 3S60 | S. Steel | 124gr | 136kg/300lbs |

DOUBLE HEAD RECEIVER

Connector between two pyramid adapters. Includes 8 stainless steel angular adjustment screws. Allows better adjustment for long stumps and reduces weight.



| Cat. No. | Height | Alloy | Weight | Max Patient Weight |
|-------------|--------|----------|--------|--------------------|
| 3T50 | 32mm | Titanium | 88gr | 136kg/300lbs |
| 3T51 | 45mm | Titanium | 98gr | 136kg/300lbs |
| 3T52 | 60mm | Titanium | 110gr | 136kg/300lbs |
| 3T53 | 75mm | Titanium | 120gr | 136kg/300lbs |
| 3S50 | 32mm | S. Steel | 135gr | 136kg/300lbs |
| 3S51 | 45mm | S. Steel | 156gr | 136kg/300lbs |
| 3S52 | 60mm | S. Steel | 179gr | 136kg/300lbs |
| 3S53 | 75mm | S. Steel | 197gr | 136kg/300lbs |
| 3A50 | 32mm | Aluminum | 65gr | 100kg/220lbs |
| 3A51 | 45mm | Aluminum | 80gr | 100kg/220lbs |
| 3A52 | 60mm | Aluminum | 94gr | 100kg/220lbs |
| 3A53 | 75mm | Aluminum | 112gr | 100kg/220lbs |

DOAN'S DOUBLE HEAD ROTATABLE RECEIVER

Created for use when distance is a problem and conventional double head adapters do not solve issues requiring rotation of components. To modify the angle of the socket and pylon, this double-head receiver rotates to make final adjustments for correct toe out and knee directions. Easy-access set screws lock the adapter at desired position.

| Cat. No. | Alloy | Weight | Max Patient Weight | Height |
|-------------|----------|--------|--------------------|--------|
| 3T54 | Titanium | 114gr | 136kg/300lbs | 34mm |
| 3T55 | Titanium | 129gr | 136kg/300lbs | 42mm |
| 3T56 | Titanium | 143gr | 136kg/300lbs | 53mm |
| 3T57 | Titanium | 156gr | 136kg/300lbs | 66mm |

Patent Pending



DOUBLE HEAD ROTATABLE RECEIVER & PYRAMID

Offering a pyramid on one end and receiver on the other. Used for minimal stump to floor distances, this adapter rotates for final socket adjustment on the pylon to correct toe out and knee directions. Safety locked at desired position using easy-access rotation set screws.

| Cat. No. | Alloy | Weight | Max Patient Weight | Height |
|-------------|----------|--------|--------------------|--------|
| 3T61 | Titanium | 117gr | 136kg/300lbs | 42mm |
| 3T63 | Titanium | 104gr | 136kg /300lbs | 34mm |

Patent Pending





DOUBLE HEAD ROTATABLE ADAPTER WITH HEIGHT ADJUSTMENT

With an overall height in the shortest position at 50mm, This adapter allows the practitioner to set a custom height.

| Cat. No. | Alloy | Weight | Max Patient Weight | Height |
|-------------|----------|--------|--------------------|---------|
| 3T65 | Titanium | 158gr | 136kg/300lbs | 51-57mm |
| 3T66 | Titanium | 172gr | 136kg/300lbs | 58-64mm |

Patent Pending



DOUBLE HEAD ROTATABLE SLIDING RECEIVER

Both end pyramid receiver with slide and rotation and an overall height of 53mm. Slides in either direction allowing for custom lateral offset with 2 locking screws.

| Cat. No. | Alloy | Weight | Max Patient Weight | Height |
|-------------|----------|--------|--------------------|--------|
| 3T82 | Titanium | 192gr | 136kg/300lbs | 52mm |

Arched dovetail design (3T95) offers adjustable angles, increasing lateral offset capability based on the pylon length. Use when more than 11mm lateral offset is needed.

| Cat. No. | Alloy | Weight | Max Patient Weight | Height |
|-------------|----------|--------|--------------------|--------|
| 3T95 | Titanium | 192gr | 136kg/300lbs | 55mm |

Patent Pending



DOUBLE HEAD ROTATABLE PYRAMID RECEIVER

Rotatable pyramid on one end and receiver on the other with an overall height of 53mm. Slides in either direction allowing for custom lateral offset with 2 locking screws.

| Cat. No. | Alloy | Weight | Max Patient Weight | Height |
|-------------|----------|--------|--------------------|--------|
| 3T83 | Titanium | 193gr | 136kg/300lbs | 47mm |

Arched dovetail design (3T96) offers adjustable angles, increasing lateral offset capability based on the pylon length. Use when more than 11mm lateral offset is needed.

| Cat. No. | Alloy | Weight | Max Patient Weight | Height |
|-------------|----------|--------|--------------------|--------|
| 3T96 | Titanium | 193gr | 136kg/300lbs | 48mm |

Patent Pending

DOUBLE HEAD SLIDING RECEIVER

Both end receiver. Slides in either direction, allowing for custom lateral offset.

| Cat. No. | Alloy | Weight | Max Patient Weight |
|-------------|----------|--------|--------------------|
| 3T80 | Titanium | 157gr | 136kg/300lbs |

Arched dovetail design (3T98) provides adjustable angles, increasing lateral offset capability based on the pylon length. Use when more than 11mm lateral offset is needed. Overall height 44mm.

| Cat. No. | Alloy | Weight | Max Patient Weight |
|-------------|----------|--------|--------------------|
| 3T98 | Titanium | 157gr | 136kg/300lbs |

Patent Pending



DOUBLE HEAD SLIDING RECEIVER & PYRAMID

Pyramid on one end and receiver on the other. Slides in either direction allowing for custom lateral offset with 2 locking screws.

| Cat. No. | Alloy | Weight | Max Patient Weight |
|-------------|----------|--------|--------------------|
| 3T81 | Titanium | 157gr | 136kg/300lbs |

Arched dovetail design (3T99) offers adjustable angles, increasing lateral offset capability based on the pylon length. Overall height of 37mm.

| Cat. No. | Alloy | Weight | Max Patient Weight |
|-------------|----------|--------|--------------------|
| 3T99 | Titanium | 157gr | 136kg/300lbs |

Patent Pending



3 ARM A/K LAMINATION ANCHOR WITH PYRAMID

For both A/K exoskeletal socket or thermoplastic frame lamination.

| Cat. No. | Alloy | Weight | Max Patient Weight |
|-------------|----------|--------|--------------------|
| 4S20 | S. Steel | 125gr | 136kg /300lbs |





3 ARM A/K LAMINATION ANCHOR WITH ROTATABLE RECEIVER

For both A/K exoskeletal socket or thermoplastic frame lamination.

| Cat. No. | Alloy | Weight | Max Patient Weight |
|-------------|---------------|--------|--------------------|
| 4S30 | S. Steel | 184gr | 136kg/300lbs |
| 4ST6 | Titanium Head | 160gr | 136kg/300lbs |



3 ARM A/K LAMINATION ANCHOR WITH ROTATABLE PYRAMID

For both A/K exoskeletal socket or thermoplastic frame lamination.

| Cat. No. | Alloy | Weight | Max Patient Weight |
|-------------|---------------|--------|--------------------|
| 4S40 | S. Steel | 175gr | 136kg/300lbs |
| 4ST8 | Titanium Head | 150gr | 136kg/300lbs |



3 ARM A/K LAMINATION ANCHOR WITH ROTATABLE SLIDING RECEIVER

With sliding and rotating titanium 4 screw receiver tip. Maximum slide of 11mm either direction.

| Cat. No. | Alloy | Weight | Max Patient Weight |
|-------------|-------------|--------|--------------------|
| 4T31 | Titanium SS | 228gr | 136kg/300lbs |

3 ARM A/K LAMINATION ANCHOR WITH ROTATABLE SLIDING PYRAMID

With sliding and rotating titanium pyramid tip. Maximum slide of 11mm either direction.

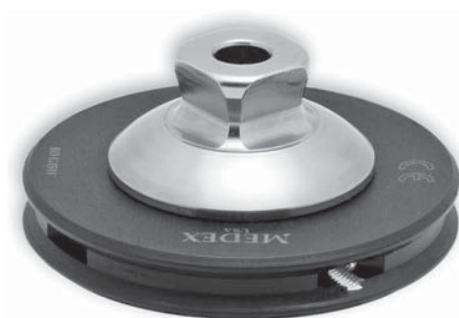
| Cat. No. | Alloy | Weight | Max Patient Weight |
|-------------|-------------|--------|--------------------|
| 4T41 | Titanium SS | 229gr | 136kg/300lbs |



LAMINATION PLATE WITH PYRAMID

Conventional lamination plate combined with a permanently installed pyramid adapter. There are no rotation or slide options. Use when space is critical. Smaller diameter plates work best for pointy stumps.

| Cat. No. | Alloy | Weight | OD | Max Patient Weight |
|-------------|-------|--------|------|--------------------|
| 4TL1 | AL-Ti | 95gr | 65mm | 136kg/300lbs |
| 4TM1 | AL-Ti | 77gr | 55mm | 136kg/300lbs |
| 4TS1 | AL-Ti | 62gr | 45mm | 136kg/300lbs |

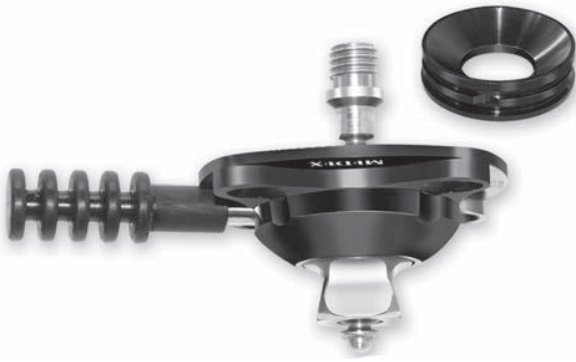


LAMINATION PLATE WITH RECEIVER

Conventional lamination plate combined with a permanently installed pyramid receiver. There are no rotation or slide options. Use when space is critical. Smaller diameter plates work best for pointy stumps.

| Cat. No. | Alloy | Weight | OD | Max Patient Weight |
|-------------|-------|--------|------|--------------------|
| 4TL2 | AL-Ti | 104gr | 65mm | 136kg/300lbs |
| 4TM2 | AL-Ti | 86gr | 55mm | 136kg/300lbs |
| 4TS2 | AL-Ti | 72gr | 45mm | 136kg/300lbs |





4 SCREW MOUNTING SHUTTLE LOCK

Ideal in situations where space is very critical for pylon height. Aluminum body with titanium pyramid, adjustable release button. Locking mechanism is placed inside the pyramid dome. Build height is 29mm and the weight includes pin, inner retainer and pyramid as a set.

| Cat. No. | Alloy | Weight | Max Patient Weight |
|-------------|----------|--------|--------------------|
| 4A25 | Aluminum | 99gr | 100kg/220lbs |

Patent Pending



4 PRONG COMBINATION SHUTTLE LOCK

Unique design combines many features needed for B/K and light-weight A/K cases. It eliminates the need for an inner socket retainer block, saves space on the length of the pylon and enables rotation adjustment. Dummy (included) makes for easy lamination. Product weights include pin and all other features except dummy.

| Cat. No. | Alloy | Weight | Max Patient Weight | Height |
|-------------|----------|--------|--------------------|--------|
| 4T28 | Titanium | 147gr | 136kg/300lbs | 38mm |

Patent Pending



SCREW THREAD SHUTTLE LOCK

For A/K or heavy use B/K situations, these shuttle locks are mounted on 3 arm stainless steel lamination anchors. The product weights listed include the anchor and pin, while the shuttle locks themselves are approximately 85/90gr.

| Cat. No. | Alloy | Weight | Max Patient Weight | Height |
|-------------|----------|--------|--------------------|--------|
| 4T26 | Titanium | 220gr | 136kg/300lbs | 27mm |

Patent Pending

4 SCREW MOUNTING SHUTTLE LOCK

Ideal in situations where space is very critical for pylon height. Includes titanium body with titanium pyramid, adjustable release button and 4 hole frame with threaded rotation. Locking mechanism is placed inside the pyramid dome reducing build height to 32mm. Weight includes pin, inner retainer and pyramid as a set. 4T27 comes with aluminum lamination pin guide, eliminating the need for a dummy.



| Cat. No. | Alloy | Weight | Max Patient Weight |
|-------------|----------|--------|--------------------|
| 4T25 | Titanium | 184gr | 136kg/300lbs |

Patent Pending

RIM System allows the practitioner to convert from pyramid to receiver or from receiver to shuttle lock immediately and with ease. This new socket lamination technology is lightweight, durable, versatile and extremely practical. Lamination RIM includes 3 dummy screws that are replaced with M8x12 or M8x6 set screws after the lamination process. Set screws will fasten the pyramid, pyramid receiver or the shuttle lock to the RIM while providing 360-degree rotation. RIM System's large opening offers easy access to the distal end of the socket and provides better discharge of dust and debris to improve visibility during the fabrication process.



LAMINATION RIM WITH ROTATABLE PYRAMID

4AT3 70mm RIM with Rotatable Pyramid. Includes 3 lamination dummy screws and 3 M8x12 stainless steel set screws.

4AT4 63mm RIM with Rotatable Pyramid. Includes 3 lamination dummy screws and 3 M8x6 stainless steel set screws. 63mm RIM will help the distal end of the socket to form better around thin stumps allowing a better formed socket shape.

| Cat. No. | OD Size | Weight | Max Patient Weight |
|-------------|---------|--------|--------------------|
| 4AT3 | 70mm | 122gr | 136kg/300lbs |
| 4AT4 | 63mm | 93gr | 136kg/300lbs |

Patent Pending





LAMINATION RIM WITH ROTATABLE SLIDING PYRAMID

4AT5 70mm RIM and Rotatable Pyramid with Slide. Includes 3 lamination dummy screws and 3 M8x12 stainless steel set screws.

4AT6 63mm RIM and Rotatable Pyramid with Slide. Includes 3 lamination dummy screws and 3 M8x6 stainless steel set screws.

| Cat. No. | OD Size | Weight | Max Patient Weight |
|-------------|---------|--------|--------------------|
| 4AT5 | 70mm | 197gr | 136kg/300lbs |
| 4AT6 | 63mm | 183gr | 136kg/300lbs |

Patent Pending



LAMINATION RIM WITH ROTATABLE RECEIVER

4AT1 70mm RIM with Rotatable Pyramid Receiver. Includes 3 lamination dummy screws 4 M8x12 and 3 M8x12 stainless steel set screws.

4AT2 63mm RIM with Rotatable Pyramid Receiver. Includes 3 lamination dummy screws 4 M8x12 and 3 M8x6 stainless steel set screws.

| Cat. No. | OD Size | Weight | Max Patient Weight |
|-------------|---------|--------|--------------------|
| 4AT1 | 70mm | 117gr | 136kg/300lbs |
| 4AT2 | 63mm | 99gr | 136kg/300lbs |

Patent Pending



LAMINATION RIM WITH ROTATABLE SLIDING RECEIVER

4AT7 70mm RIM and Rotatable Pyramid Receiver with Slide. Includes 3 lamination dummy screws 4 M8x12 and 3 M8x12 stainless steel set screws.

4AT8 63mm RIM and Rotatable Pyramid Receiver with Slide. Includes 3 lamination dummy screws 4 M8x12 and 3 M8x6 stainless steel set screws.

| Cat. No. | OD Size | Weight | Max Patient Weight |
|-------------|---------|--------|--------------------|
| 4AT7 | 70mm | 196gr | 136kg/300lbs |
| 4AT8 | 63mm | 178gr | 136kg/300lbs |

Patent Pending

RIM SYSTEM SHUTTLE LOCKS

RIM System allows the Shuttle Lock to be installed inside the pyramid dome, thus reducing the build height significantly and cancelling the need for lamination dummy. Available in 70mm and 63mm RIM radius. RIM is constructed with aerospace grade aluminum with stainless steel rotation set screws while the pyramid dome and head is constructed of titanium. Shuttle lock inside the pyramid shell is Delrin thermoplastic with stainless steel catch and springs. Plastic push button can be cut to desired length or removed completely. 8mm pin is included.



| Cat. No. | Radius | Weight | Max Patient Weight |
|-------------|--------|--------|--------------------|
| 4T20 | 70mm | 200gr | 136kg/300lbs |
| 4T21 | 63mm | 181gr | 136kg/300lbs |

Patent Pending

MODULAR SINGLE AXIS KNEE JOINT

With stance control, constant friction and extension assist

For above knee amputees. Connection of the upper joint to the swing axis and connection of the lower joint to the knee axis creates a functional load dependent brake. Recommended for amputees with lower and moderate functional levels. Includes extension assist cable, compression springs, distal anchor shell, and adjustment ring.

| Cat. No. | Alloy | Weight | Max Patient Weight |
|-------------|----------|--------|--------------------|
| 5T40 | Titanium | 349gr | 100kg/220lbs |
| 5S40 | S. Steel | 525gr | 100kg/220lbs |

With lock and internal extension assist

For above knee amputees. Upper and lower joints are connected through the knee axis by a bushing. The adjustable lock secures the knee in extension and the lock is released using the cable. Internal spring extension assist provides automatic locking of the knee at full extension. It helps control swing phase and has a high stance stability. Recommended for amputees with lower functional levels.

| Cat. No. | Alloy | Weight | Max Patient Weight |
|-------------|----------|--------|--------------------|
| 5T50 | Titanium | 385r | 100kg/220lbs |
| 5S50 | S. Steel | 525gr | 100kg/220lbs |





ROTATING PYRAMID TIP

Pyramid insert with 36mm threads.

| Cat. No. | Alloy | Weight | Max Patient Weight |
|-------------|----------|--------|-------------------------|
| 4T09 | Titanium | 38gr | 136kg/300lbs Standard |
| 4T10 | Titanium | 44gr | 136kg/300lbs 2mm Longer |
| 4T11 | Titanium | 48gr | 136kg/300lbs 4mm Longer |



ROTATING RECEIVER TIP

4 screw receiver insert with 36mm threads.

| Cat. No. | Alloy | Weight | Max Patient Weight |
|-------------|----------|--------|--------------------|
| 4T08 | Titanium | 48gr | 136kg/300lbs |



ROTATABLE SLIDING PYRAMID TIP

Pyramid on one end and 36mm threads on the other. Slides in either direction allowing for custom lateral offset with 2 locking screws.

| Cat. No. | Alloy | Weight | Max Patient Weight |
|-------------|----------|--------|--------------------|
| 4T14 | Titanium | 122gr | 136kg/300lbs |

Arched dovetail design (4T50) offers adjustable angles, increasing lateral offset capability based on the pylon length. For use with 4 hole frame (3T90) or 3 arm lamination anchor (4S35).

| Cat. No. | Alloy | Weight | Max Patient Weight |
|-------------|----------|--------|--------------------|
| 4T50 | Titanium | 122gr | 136kg/300lbs |

Patent Pending



ROTATABLE SLIDING RECEIVER TIP

Receiver on one end and 36mm threads on the other. Slides in either direction allowing for custom lateral offset with 2 locking screws.

| Cat. No. | Alloy | Weight | Max Patient Weight |
|-------------|----------|--------|--------------------|
| 4T15 | Titanium | 120gr | 136kg/300lbs |

Arched dovetail design (4T51) offers adjustable angles, increasing lateral offset capability based on the pylon length. For use with 4 hole frame (3T90) or 3 arm lamination anchor (4S35).

| Cat. No. | Alloy | Weight | Max Patient Weight |
|-------------|----------|--------|--------------------|
| 4T51 | Titanium | 120gr | 136kg/300lbs |

4 HOLE ROTATING FRAME ONLY

An individual 4 hole rotation frame with clamp screw.

| Cat. No. | Alloy | Weight | Max Patient Weight |
|-------------|----------|--------|--------------------|
| 3T90 | Titanium | 33gr | 136kg/300lbs |



3 ARM LAMINATION ANCHOR ONLY

An individual threaded anchor with clamp screw.

| Cat. No. | Alloy | Weight | Max Patient Weight |
|-------------|----------|--------|--------------------|
| 4S35 | S. Steel | 109gr | 136kg/300lbs |



CONNECTOR PLATE

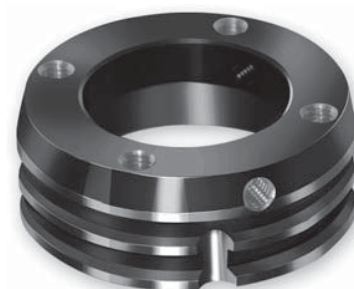
| Cat. No. | Alloy | Weight | Max Patient Weight |
|-------------|----------|--------|--------------------|
| 4A80 | Aluminum | 70gr | 136kg/300lbs |



COUPLING

4A65 is a lamination connector coupling for conventional laminated sockets.

| Cat. No. | Alloy | Weight | Max Patient Weight | Height |
|-------------|----------|--------|--------------------|--------|
| 4A65 | Aluminum | 75gr | 136kg/300lbs | 24mm |



COUPLING

4A70 is designed for use alongside shuttle lock pin slides. Includes four M6 screws, for use with 4 hole receiver or pyramid.

| Cat. No. | Alloy | Weight | Max Patient Weight | Height |
|-------------|----------|--------|--------------------|--------|
| 4A70 | Aluminum | 45gr | 136kg/300lbs | 17mm |





CHILD SACH FOOT ADAPTER

Child sized connector between SACH Energy Storing Foot and pylon. Includes stainless steel bolt, lock washer, and flat washer.

| Cat. No. | Alloy | Weight | Max Patient Weight |
|-------------|----------|--------|--------------------|
| 2CT5 | Titanium | 62g | 80kg/175lbs |



CHILD PYLON WITH RECEIVER

With 4 M6 tilt adjustment set screws and 22mm anodized aluminum alloy tube. (300 x 22 x 2mm).

| Cat. No. | Alloy | Weight | Max Patient Weight |
|-------------|----------|--------|--------------------|
| 2CT6 | Titanium | 113gr | 80kg/175lbs |



CHILD TUBE CLAMP ADAPTER

For 22mm tubes. Includes 1 rotation and 4 M6 tilt adjustment set screws

| Cat. No. | Alloy | Weight | Max Patient Weight |
|-------------|----------|--------|--------------------|
| 2CT7 | Titanium | 40g | 80kg/175lbs |



CHILD PYRAMID WITH 4 HOLES

Connector between socket and pylon, 6.5mm center hole.

| Cat. No. | Alloy | Weight | Max Patient Weight |
|-------------|----------|--------|--------------------|
| 3CT5 | Titanium | 26gr | 80kg/175lbs |



CHILD SLIDING TUBE CLAMP PYRAMID

Child sized tube clamp adapter on one end and pyramid on the other. Slides in either direction allowing for custom lateral offset with 2 locking screws.

| Cat. No. | Alloy | Weight | Max Patient Weight |
|-------------|----------|--------|--------------------|
| 4CT9 | Titanium | 93gr | 80kg/175lbs |

CHILD DOUBLE HEAD ROTATABLE RECEIVER

For use in situations when distance is a problem and conventional double head adapters do not solve issues requiring rotation of components. To modify the angle of the socket and pylon, this double-head receiver rotates to make final adjustments for correct toe out and knee directions. Easy-access set screws lock the adapter at the desired position. Includes 8 M6 tilt adjustment set screws.



| Cat. No. | Alloy | Weight | Max Patient Weight | Height |
|-------------|----------|--------|--------------------|--------|
| 3CT1 | Titanium | 69gr | 80kg/175lbs | 26mm |
| 3CT2 | Titanium | 79gr | 80kg/175lbs | 37mm |
| 3CT3 | Titanium | 88gr | 80kg/175lbs | 48mm |
| 3CT4 | Titanium | 94gr | 80kg/175lbs | 60mm |

Patent Pending

CHILD DOUBLE HEAD RECEIVER

Connector between two pyramid adapters. Includes 8 M6 stainless steel angular adjustment screws. Allows better adjustment for long stumps and reduces weight.



| Cat. No. | Alloy | Weight | Height | Max Patient Weight |
|-------------|----------|--------|--------|--------------------|
| 3CT6 | Titanium | 44gr | 22mm | 80kg/175lbs |
| 3CT7 | Titanium | 51gr | 32mm | 80kg/175lbs |
| 3CT8 | Titanium | 60gr | 45mm | 80kg/175lbs |
| 3CT9 | Titanium | 70gr | 60mm | 80kg/175lbs |

CHILD ROTATING PYRAMID WITH 4 HOLES

Socket to pylon connector with threaded rotation. Eliminates the use of pressure plates and sets rotation with one screw.



| Cat. No. | Alloy | Weight | Max Patient Weight |
|-------------|----------|--------|--------------------|
| 3TC1 | Titanium | 44gr | 80kg/175lbs |



CHILD ROTATING RECEIVER WITH 4 HOLES

Child sized rotatable connector between socket and pylon. Threaded rotation allows rotation set with one screw.

| Cat. No. | Alloy | Weight | Max Patient Weight |
|-------------|----------|--------|--------------------|
| 3TC2 | Titanium | 51gr | 80kg/175lbs |



CHILD DOUBLE HEAD ROTATABLE RECEIVER & PYRAMID

Offers a pyramid on one end and receiver on the other. Used for minimal stump to floor distances, this adapter rotates for final socket adjustment on the pylon to correct toe out and knee directions. Safety locked at desired position using 3 easy-access rotation set screws. Includes 4 M6 tilt adjustment set screws.

| Cat. No. | Alloy | Weight | Max Patient Weight |
|-------------|----------|--------|--------------------|
| 4CT1 | Titanium | 66gr | 80kg/175lbs |
| 4CT2 | Titanium | 72gr | 80kg/175lbs |



CHILD DOUBLE HEAD ARCHED SLIDING RECEIVER

Double ended receiver. Arched dovetail design provides adjustable angles, increasing lateral offset capability based on the pylon length. Safety locked at desired position using 2 easy-access rotation set screws. Includes 8 M6 tilt adjustment set screws. Overall height 37mm.

| Cat. No. | Alloy | Weight | Max Patient Weight |
|-------------|----------|--------|--------------------|
| 4CT7 | Titanium | 116gr | 80kg/175lbs |

Patent Pending



CHILD DOUBLE HEAD ARCHED SLIDING RECEIVER & PYRAMID

Pyramid on one end and receiver on the other. Arched dovetail design offers adjustable angles, increasing lateral offset capability based on the pylon length. Safety locked at desired position using 2 easy-access rotation set screws. Includes 4 M6 tilt adjustment set screws. Overall height 42mm.

| Cat. No. | Alloy | Weight | Max Patient Weight |
|-------------|----------|--------|--------------------|
| 4CT8 | Titanium | 121gr | 80kg/175lbs |

CHILD 3 ARM LAMINATION ANCHOR WITH ROTATABLE RECEIVER

For both A / K Exoskeletal Socket or Thermoplastic frame lamination.

| Cat. No. | Alloy | Weight | Max Patient Weight |
|-------------|----------|--------|--------------------|
| 4TC1 | Titanium | 116gr | 80kg/175lbs |



CHILD 3 ARM LAMINATION ANCHOR WITH ROTATABLE PYRAMID

For both A / K Exoskeletal Socket or Thermoplastic frame lamination.

| Cat. No. | Alloy | Weight | Max Patient Weight |
|-------------|----------|--------|--------------------|
| 4TC2 | Titanium | 108gr | 80kg/175lbs |



CHILD 4 ARM LAMINATION ANCHOR WITH ROTATABLE RECEIVER

For both A / K Exoskeletal Socket or Thermoplastic frame lamination.

| Cat. No. | Alloy | Weight | Max Patient Weight |
|-------------|----------|--------|--------------------|
| 4TC3 | Titanium | 126gr | 80kg/175lbs |



CHILD 4 ARM LAMINATION ANCHOR WITH ROTATABLE PYRAMID

For both A / K Exoskeletal Socket or Thermoplastic frame lamination.

| Cat. No. | Alloy | Weight | Max Patient Weight |
|-------------|----------|--------|--------------------|
| 4TC4 | Titanium | 119gr | 80kg/175lbs |





CHILD LAMINATION RIM WITH ROTATING PYRAMID

| Cat. No. | Alloy | Weight | Max Patient Weight |
|-------------|----------|--------|--------------------|
| 4TC5 | Titanium | 66gr | 80kg/175lbs |



CHILD LAMINATION RIM WITH ROTATING RECEIVER

| Cat. No. | Alloy | Weight | Max Patient Weight |
|-------------|----------|--------|--------------------|
| 4TC6 | Titanium | 72gr | 80kg/175lbs |



CHILD CONNECTOR PLATE

| Cat. No. | Alloy | Weight | Max Patient Weight |
|-------------|----------|--------|--------------------|
| 4TC7 | Aluminum | 116gr | 80kg/175lbs |



Medex is pleased to

... give you the leverage you need

As a practitioner you have complete control in the type of solutions you offer your patients with the wide array of features available in Medex components.

... join experience with innovation

Real-world knowledge in prosthetic practice and manufacturing industries joins materials engineering, research and development to bring you exciting new Medex parts.

... run on sound footing

Focused on manufacturing high-quality dependable products, Medex concentrates all of its efforts on the best raw materials, highest standards of manufacturing, continually evolving component models, and effective service. All Medex modular adapters are presented in order of position from the foot up and ending with accessories.



INDEX

| Product | page | Product | page |
|---|-------------|---|----------------------------|
| FOOT ADAPTERS - Sach Foot Adapters | 1 | LAMINATION PLATES - w/Pyramid or Receiver | 14 |
| PYLONS AND CLAMPS - Receiver - Tube unit - Tubes w/Receivers - Long Tube w/Pyramid - Tube Clamp Adapters - Sliding Tube Clamps | 2 3 4 | SHUTTLE LOCKS - 4 Screw Mounting Shuttle Lock - 4 Prong Combination Shuttle Lock - Screw Thread Shuttle Lock - 4 Screw Mounting Shuttle Lock | 15 16 |
| 4 HOLE ADAPTERS - Pyramids w/4 Holes - Pyramid Adapters w/4 Holes - Receivers - Rotatable Sliding Pyramid w/4 Holes - Rotatable Sliding Receiver w/4 Holes | 5 6 7 | RIM SYSTEMS - Lamination Rims | 16 17 |
| 4 PRONG ADAPTERS - Pyramid w/4 Prongs | 7 7-8 | RIM SYSTEMS SHUTTLE LOCKS | 18 |
| DOUBLE HEAD ADAPTERS - Double Head Pyramids - Double Head Receivers | 9 | KNEE JOINTS - Modular Single Axis Knee Joint | 18 |
| DOUBLE HEAD ROTATES AND SLIDES - Doan's Double Head Rotatables | 10 | ROTATING TIPS - Rotating Pyramid Tip - Rotating/Sliding Tips | 19 |
| ROTATES AND SLIDES - Double Head Rotatables - Double Head Receivers | 11 12 | ROTATING FRAMES - 4 Hole Rotating Frame - 3 Arm Lamination Anchor | 20 |
| LAMINATION ANCHORS - 3 Arm A/K Lamination Anchor - 3 Arm Anchors w/Rotatables | 12 13-14 | CONNECTORS AND COUPLINGS | 20 |
| | | PEDIATRIC COMPONENTS - Child SACH Foot Adapter - Child Pylon w/ Receiver - Child Tube Clamp Adapters - Child Pyramid w/4 Holes - Child Double Head Receivers - Child Rotating Pyramid w/4 Holes - Child Double Head Rotatables - Child 3 & 4 Arm Lamination Anchors - Child Lamination Rim | 21 22 23 24 25 |

TORQUE SETTINGS AND LOCTITE RECOMMENDATIONS FOR MEDEX MODULAR ADAPTER SCREWS-BOLTS

| | | | | |
|--|--|--|---|---|
|  |  |  |  |  |
| <p>10mm Sach Foot Adapter Bolt Torque: 20Nm</p> <p>8mm Sach Foot Adapter Bolt Torque: 15Nm Loctite: No</p> | <p>5mm Clamp Screws For All Colors and Lengths Torque: 9Nm Loctite : No</p> | <p>6mm Pylon-Socket Attachment Countersunk Head Bolt Torque: 12Nm Loctite: No</p> | <p>5mm Clamp Screws For All Colors and Lengths Torque : 9Nm Loctite : No</p> | <p>8mm Alignment Set Screws For All Receivers Torque: 15Nm Loctite: Yes</p> <p>8mm Rotation Set Screws, Oval Tip, Flat Tip Torque: 9Nm Loctite: Yes</p> |

This catalog covers lower limb endoskeletal components.

Please request information on:

Gel Liners
Suspension sleeves
Carbon Fiber sleeves and cloth
Private Label manufacturing
Prosthetic component design, prototype and development

MEDEX

CE

TOLL FREE: 1-888-886-2420
P.O. Box 21, Kensington, MD, 20895
Phone: 301-657-2681
Fax: 301-657-2796

All manuals for products may be found at
sales@medexinternational.com
www.medexinternational.com

