

3-Tex[®]

/// advance

A NEW CONCEPT IN
FUNCTIONAL ORTHOSES

A woman with a large black backpack and an orange cap is sitting on a rocky mountain peak, adjusting her brown hiking boot. She is wearing a grey tank top, denim shorts, and a black knee brace on her right leg. The background shows a vast, hazy mountain landscape under a clear blue sky. The image is framed by dark blue diagonal lines.

 ORLIMAN[®]

THE KNEE *in movement!*

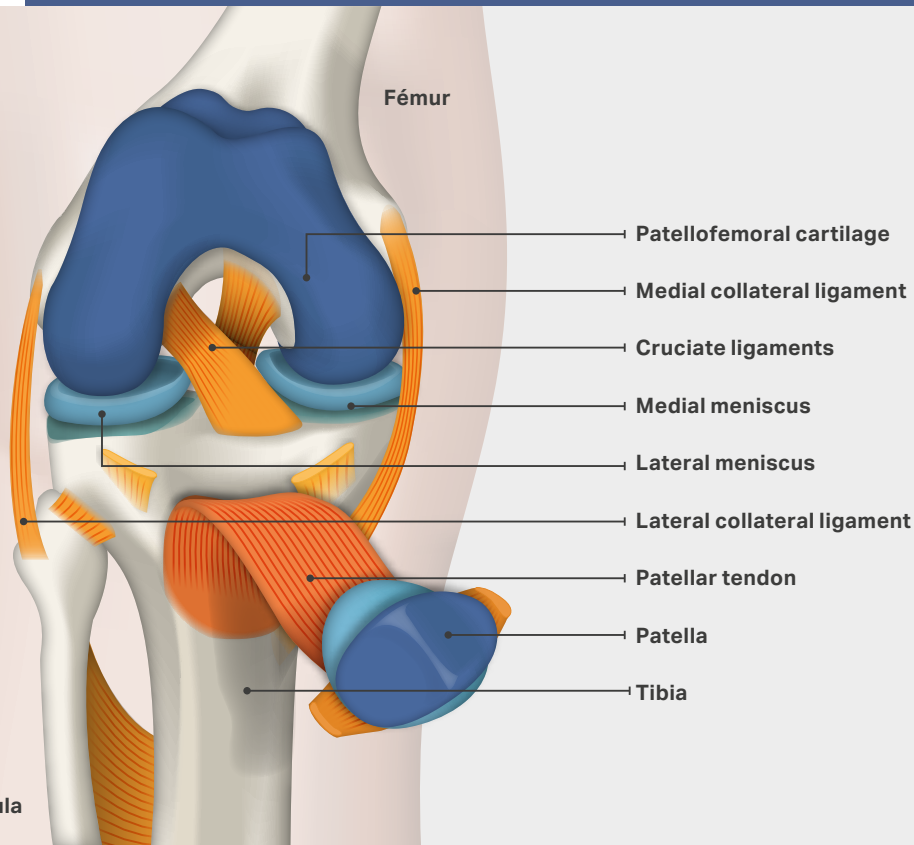
Climbing stairs, walking and running are everyday actions that we can perform thanks to our knees.

The knee joint is one of the most exposed and least protected, and can suffer from a wide range of mechanical injuries.



The knee needs to be able to perform many movements in our daily lives. Its extraordinary range of articular motion is possible because it consists of complex structures which must always be in good condition (bone, cartilage, ligaments, muscles and tendons).

In this illustration, we can see how four bones (the femur, tibia, fibula and patella) meet, forming a joint of paramount importance for walking and running, which supports the entire weight of the body on foot take-off and landing.

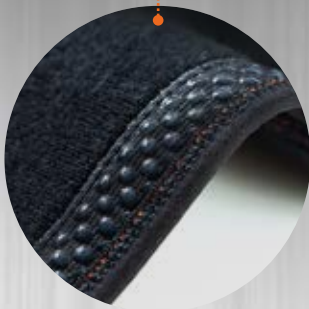


◀ The tibia does not offer sufficiently secure bone accommodation to the femoral condyles. Because of this, the stability of this joint is directly dependent on the health of various structures such as cartilage, ligaments, muscles and tendons, which play a key role.

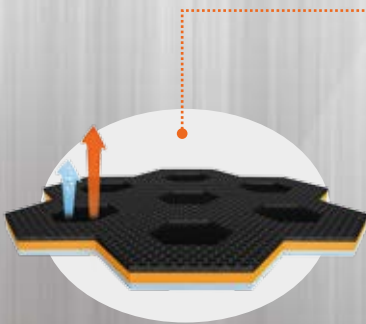
Mechanical overload caused by obesity, traumatic and sports injuries, the wrong choice of footwear or poor posture commonly trigger pathological processes such as:

- Degenerative processes
- Tendinitis
- Ruptured ligaments, cartilage, etc.
- Instability
- Patellar luxation
- Fractures
- Infectious and/or inflammatory processes





SILICONE BUBBLE GRIP
Prevents slippage and provides greater grip.



THREE-LAYER BREATHABLE MATERIAL
New material composed of 3 layers that fit perfectly to form a "second skin".



PROXIMAL FINGER LOOPS
Make it easier to slide the knee support on.



SILICONE PATELLA PAD
Intermittent micromassage effect as the knee moves to promote the reabsorption of oedemas and haematomas.

▼ **THREE-LAYER** MATERIAL WITH BREATHABLE ELASTIC FABRIC

Its structure allows the skin to perspire and maintain body temperature.

- 1**

Elastic membrane

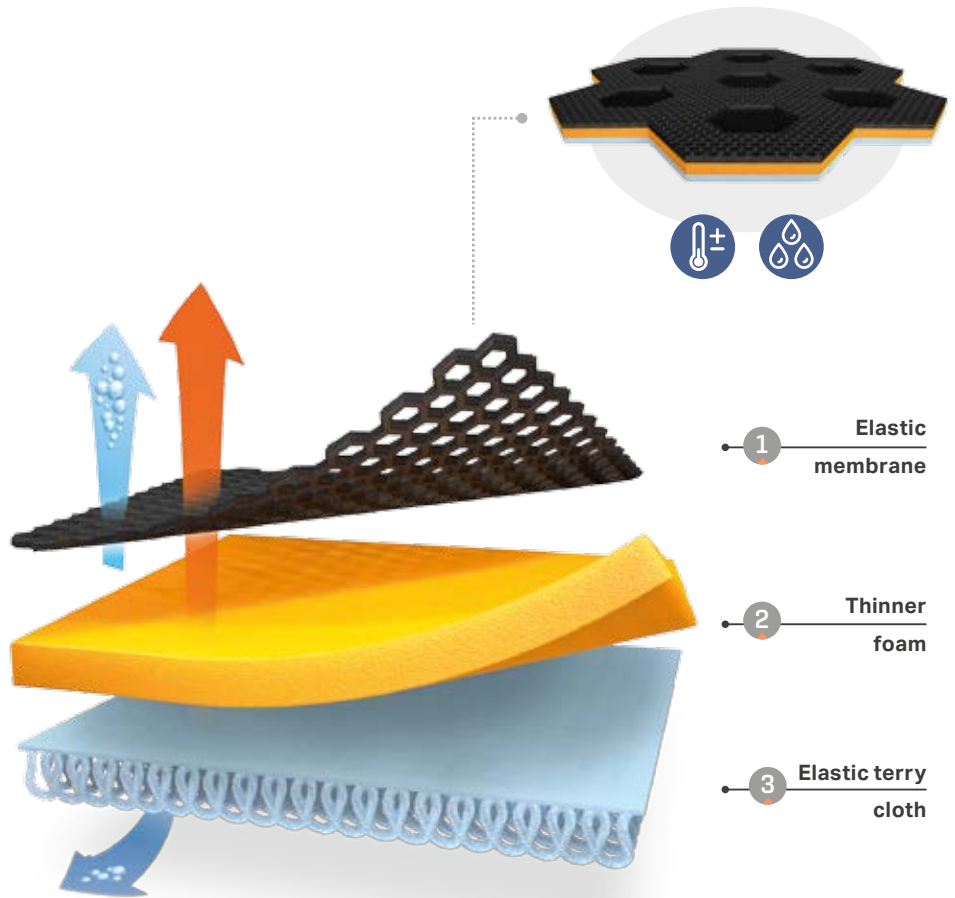
Formed by microfibrils which provide a soft feel and enable rapid dispersion of sweat and faster drying of the support.
- 2**

Thinner foam

Thinner and more elastic polyurethane foam for a better fit.
- 3**

Elastic terry cloth


Soft and hypoallergenic inner elastic terry cotton lining.



▼ A NEW CONCEPT IN **KNEE SUPPORTS**



▼ MAIN CHARACTERISTICS

CHARACTERISTICS	EFFECT	BENEFIT
<p>Uniform elasticity</p> 	<p>Greater elasticity.</p>	<p>Helps placement and removal of the support and allows for greater mobility.</p>
<p>Three-dimensional compression</p> 	<p>Increases protection of the affected area.</p>	<p>Improves proprioception and adapts to changes in morphology during the gait dynamic (important in the popliteal area).</p>
<p>Open patella and patella pad</p> 	<p>Stabilises and maintains the kneecap in proper alignment.</p>	<p>Prevents the onset of new knee injuries and improves anatomical adaptation during repetitive flexion and extension movements.</p>
<p>Femoral and tibial straps</p> 	<p>Reinforce the joint control provided by the support (either as stabilisers, polycentric joints or flexion-extension control). Ensure firm fastening.</p>	<p>Prevent slippage and provide greater lateral-medial and anterior-posterior stabilisation.</p>
<p>Interior silicone bubble grip</p> 	<p>Reinforce the control and fit of the support.</p>	<p>Prevent slippage.</p>

MAIN DISORDERS

▼ CLASSIFICATION OF THE 3-TEX® ADVANCE RANGE OF KNEE SUPPORTS BY PATHOLOGY AND STABILISATION

Tendinitis
Patellofemoral syndrome



1
Side stabilisers



Patella injuries

/ 7103 /

/ 7119 /

/ 7117 /

Tendon injuries
Degenerative processes



2
Polycentric joints



/ 7104 /

/ 7104-A /

/ 7120 /

Ligament and meniscus injuries



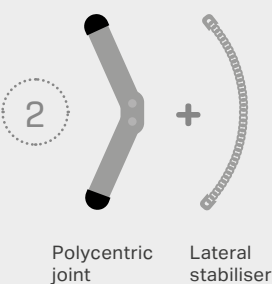
3
Joint with flexion-extension control



/ 7112 /

/ 7113-A /

Gonarthrosis
Genu valgum/varum
Meniscal injuries



2
Polycentric joint



Lateral stabiliser



/ 6121 /

DEGREES OF INJURY

- ▼ MINOR
- ▼ MODERATE
- ▼ SERIOUS



▸ Proximal finger loops for easier fitting.



▸ Uniform elasticity.

1



▸ Flexible lateral stabilisers





/ 7103 / ● / 6103 / ●

Knee brace with flexible lateral reinforcements

/ 7119 / ● / 6119 / ●

Wrap-around knee support with mediolateral straps

▼ CHARACTERISTICS

Fabric knee support made from three-layer breathable elastic material. Composed of three layers – elastic microfibre fabric, polyurethane foam and terry cloth – which facilitates rapid dispersion of sweat, greater elasticity and a better fit. Features silicone bubble grip to prevent slippage, open patella with patella pad, side stabilisers and femoral and tibial straps for firmer fastening.

▼ EFFECTS

Support and stability. Light compression in the quadriceps and patellar tendons.

▼ INDICATIONS

- Joint pain.
- Osteoarthritis and arthritis.
- Tendinitis.
- Mild patellar and mediolateral instability.
- Post-surgical treatments.

▼ CHARACTERISTICS

Fabric knee support in three-layer breathable elastic material. Made from elastic velour (knee area) and elastic fabric (strap area). Composed of three layers – elastic microfibre fabric, polyurethane foam and terry cloth – which facilitates rapid dispersion of sweat, greater elasticity and a better fit, and features silicone bubble grip to prevent slippage. Open patella with patella pad, mediolateral straps and opening in the popliteal area.

▼ EFFECTS

Compression, support and stability.

▼ INDICATIONS

- Stabilisation during sports activities or straining situations.
- Patients whose special morphology requires quick and easy placement.

SIZES	PERIMETER CM
1	32-34
2	34-36
3	36-38
4	38-41
5	41-44
6	44-49



SIZE
universal



SILICONE PAD

► Intermittent micromassage effect as the knee moves to promote the reabsorption of oedemas and haematomas.



Sin
LATEX
free

Calf opening for a better fit.

/ 7104 / ● / 6104 / ●

Knee brace with polycentric joints



2

► Polycentric joints



▼ **CHARACTERISTICS**

Fabric knee support made from three-layer breathable elastic material. Composed of three layers – elastic microfibre fabric, polyurethane foam and terry cloth – which facilitates rapid dispersion of sweat, greater elasticity and a better fit. Features silicone bubble grip to prevent slippage. Open patella with silicone patella pad, metal straps with polycentric joints, femoral and tibial straps for firmer fastening and calf opening.

▼ **EFFECTS**

Support and stability. The polycentric joints provide enhanced stability at mediolateral level. Light compression in the quadriceps and patellar tendons. With the movement of the knee, the silicone pad produces an intermittent micromassage effect to promote the reabsorption of oedemas and haematomas.

▼ **INDICATIONS**

- Joint pain.
- Osteoarthritis and arthritis.
- Tendinitis.
- Mild mediolateral instability.
- Capsular ligament injuries.

SIZES	PERIMETER CM
1	32-34
2	34-36
3	36-38
4	38-41
5	41-44
6	44-49



Perimeter in cm around centre of patella



Knee support length 35 cm



/ 7104-A / ● / 6104-A / ●

Open knee support with polycentric joints

/ 7120 / ● / 6120 / ●

Wrap-around knee support with polycentric joints

▼ CHARACTERISTICS

Fabric knee support made from three-layer breathable elastic material. Composed of three layers – elastic microfibre fabric, polyurethane foam and terry cloth – which facilitates rapid dispersion of sweat, greater elasticity and a better fit. Features silicone bubble grip to prevent slippage. Open patella, metal straps with polycentric joints, femoral and tibial straps for firmer fastening.

▼ EFFECTS

Support and stability. The polycentric joints provide enhanced stability at mediolateral level.

▼ INDICATIONS

- Joint pain.
- Osteoarthritis and arthritis.
- Tendinitis.
- Mild mediolateral instability.

▼ CHARACTERISTICS

Fabric knee support in three-layer breathable elastic material. Made from elastic velour (knee area) and elastic fabric (strap area); composed of three layers – elastic microfibre fabric, polyurethane foam and terry cloth – which facilitates rapid dispersion of sweat, greater elasticity and a better fit, and features silicone bubble grip to prevent slippage. Open patella with patella pad, polycentric joints with mediolateral straps, opening in the popliteal area and wrap-around closure system.

▼ EFFECTS

Compression, support and mediolateral stabilisation.

▼ INDICATIONS

- Joint pain.
- Mild mediolateral instability.
- Capsular ligament injuries.
- Post-surgical knee treatments.
- Stabilisation during sports activities or straining situations.
- Patients whose special morphology requires quick and easy placement.

SIZES	PERIMETER CM
1	32-34
2	34-36
3	36-38
4	38-41
5	41-44
6	44-49



SIZES	PERIMETER CM
1	32-36
2	36-41
3	41-49





► 0-15-30-60-90°
adjustment.



7112

► The knee support's femoral opening facilitates fitting and firmer posterior fastening in the calf area.



7113-A

► The knee support extends from the middle third of the thigh to the middle third of the leg. Features a front opening system along its length to facilitate fitting.

3



Polycentric joints with
► flexion-extension control
and limitation.





/ 7112 / ● / 6112 / ●
Short flexion-extension knee support

/ 7113 / ● / 6113 / ●
Long/open flexion-extension knee support

▼ **CHARACTERISTICS**

Fabric knee support made from three-layer breathable elastic material. Composed of three layers – elastic microfibre fabric, polyurethane foam and terry cloth – which facilitates rapid dispersion of sweat, greater elasticity and a better fit. Features silicone bubble grip to prevent slippage. Polycentric joint with 0-15-30-60-90° in flexion-extension, patella pad below the knee. Femoral and tibial straps for a better fit.

▼ **EFFECTS**

Compression, support and mediolateral stabilisation. Flexion-extension movement range control.

▼ **INDICATIONS**

- Post-surgical knee treatment.
- Post-injury rehabilitation.
- Disorders in which the movement range of the knee joint needs to be controlled.

▼ **CHARACTERISTICS**

Fabric knee support made from three-layer breathable elastic material. Composed of three layers – elastic microfibre fabric, polyurethane foam and terry cloth – which facilitates rapid dispersion of sweat, greater elasticity and a better fit. Features silicone bubble grip to prevent slippage. Polycentric joint with 0-15-30-60-90° in flexion-extension. Femoral and tibial straps for a better fit.

▼ **EFFECTS**

Compression, support and mediolateral stabilisation. Flexion-extension movement range control.

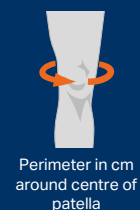
▼ **INDICATIONS**

- Post-surgical knee treatment.
- Post-injury rehabilitation.
- Disorders in which the movement range of the knee joint needs to be controlled.

SIZES	PERIMETER CM
1	32-34
2	34-36
3	36-38
4	38-41
5	41-44
6	44-49



SIZES	PERIMETER CM
1	32-34
2	34-36
3	36-38
4	38-41
5	41-44
6	44-49





► Traction system with elastic straps and Velcro closure that embraces the kneecap.



/ 7117D / right ● / 7117I / left ●

Knee support for lateral or medial patella control



▼ CHARACTERISTICS

Fabric knee support made from three-layer breathable elastic material. Composed of three layers – elastic microfibre fabric, polyurethane foam and terry cloth – which facilitates rapid dispersion of sweat, greater elasticity and a better fit. Features silicone bubble grip to prevent slippage.

Features flexible mediolateral stabilisers, semi-circular silicone patella cushion and patella pad, also semi-circular.

▼ EFFECTS

Compression, support and mediolateral and flexion-extension stabilisation.

▼ INDICATIONS

- External or internal hyperpressure syndromes and patellar subluxations.
- Prevention of recurring injuries (e.g. patellar luxation).
- Post-surgical treatment of the lateral or medial section of the retinaculum.

Pad position	Select ref.
Right outer	7117D (Right)
Right inner	7117I (Left)
Left outer	7117I (Left)
Left inner	7117D (Right)

SIZES	PERIMETER CM
1	32-34
2	34-36
3	36-38
4	38-41
5	41-44
6	44-49



Perimeter in cm
around centre of
patella



Knee support
length
35 cm



Internal or external condyle pressure to realign the femur with the tibia and enable correction of valgus or varus axial deviation while reducing the load on the affected compartment (medial or lateral) in the case of osteoarthritis. Increased compression caused by inflation of the bag, which produces load relief in the contralateral compartment and minimises pressure on the tibial plateau. The polycentric joint and inflation bag help to improve alignment.

/ 6121D / right ● / 6121I / left ●

Varus-valgus knee support for gonarthrosis

▼ CHARACTERISTICS

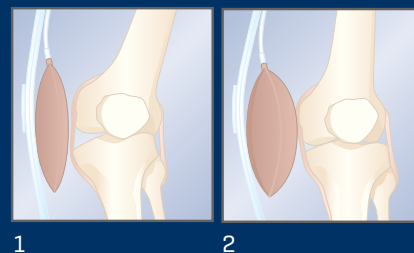
Fabric knee support made from three-layer breathable elastic material. Composed of three layers – elastic microfibre fabric, polyurethane foam and terry cloth – which facilitates rapid dispersion of sweat, greater elasticity and a better fit. Features silicone bubble grip to prevent slippage.

Consisting of a patella pad, polycentric joint on one side with condyle air bag and inflation system, on the opposite side, it features flexible stays and 2 straps countering the inflatable bag, creating, by pressure of the three points, an opening or elongation of the obstructed compartment. Femoral and tibial straps for firmer fastening with anterior femoral opening and posterior calf opening for ease of fitting.

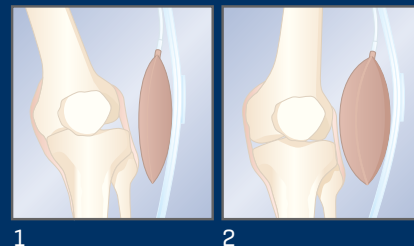
▼ INDICATIONS

- Osteoarthritis of the medial or lateral compartments of the knee.
- Genu valgum or varum associated with osteoarthritis.
- Injuries to the medial or lateral meniscus.

Genu Valgus



Genu Varus



Important:

To select the right model according to the disorder, consult the chart below.

Disorder:	Select ref.
Varus right leg	6121D (Right)
Valgus right leg	6121I (Left)
Varus left leg	6121I (Left)
Valgus left leg	6121D (Right)

SIZES	PERIMETER CM
1	32-34
2	34-36
3	36-38
4	38-41
5	41-44
6	44-49



